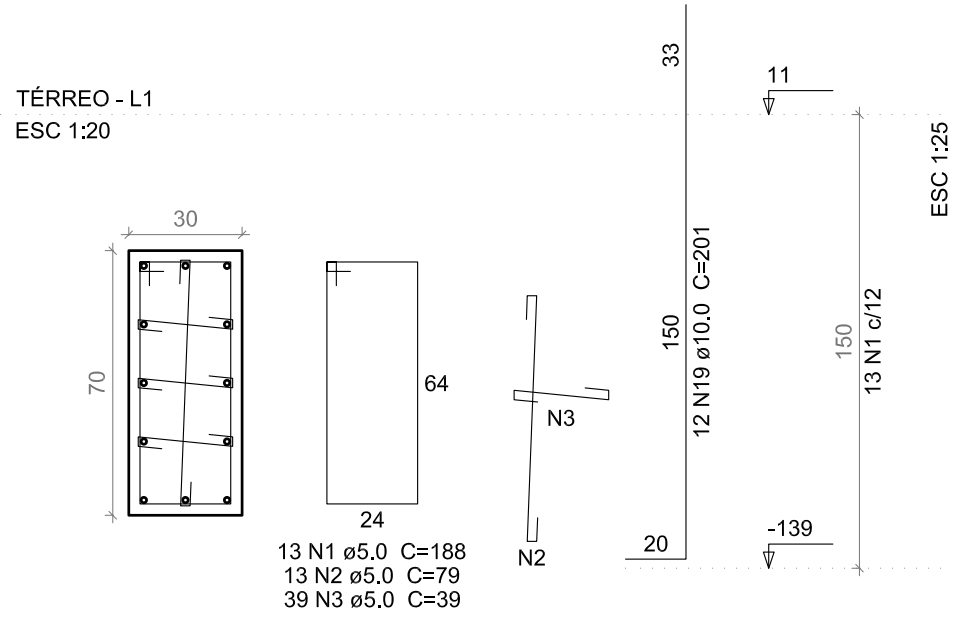


P1=P2=P3=P4=P5=P6=P7=P8=P25=P26=P27=P28
=P29=P30=P31=P32



S1=S2=S3=S4=S5=S6=S7=S8=S25=S26=S27=S28

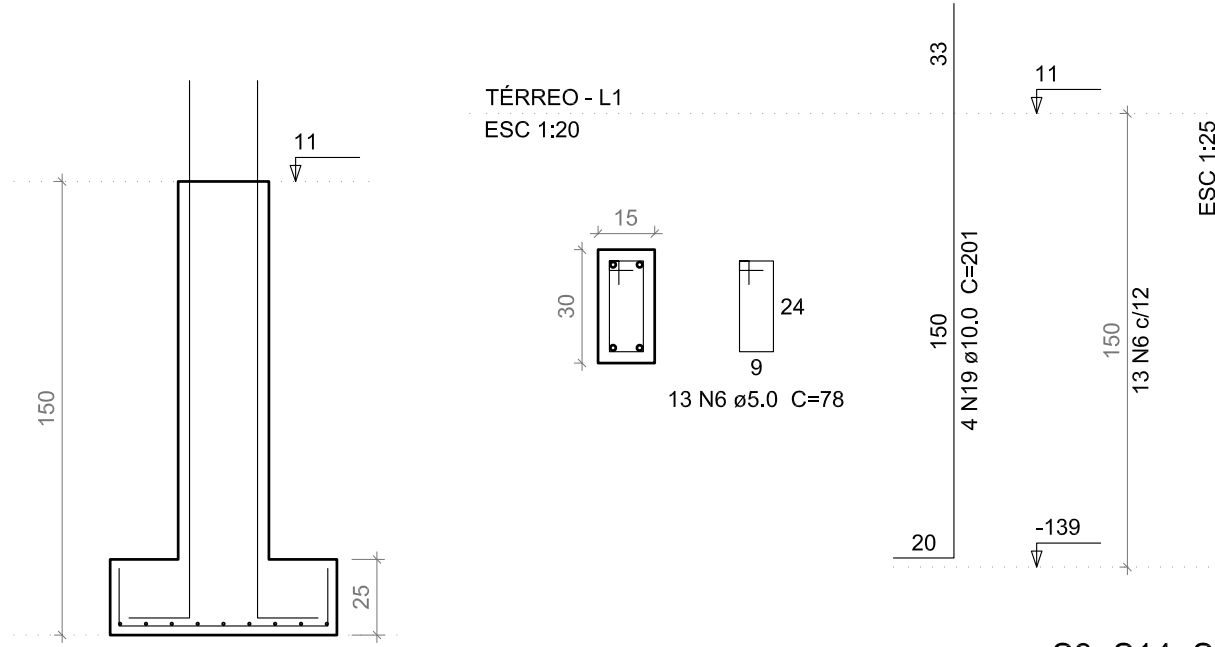
=S29=S30=S31=S32

PLANTA
ESC 1:25

CORTE
ESC 1:25

Solo com capacidade de suporte > 2.00 kgf/cm²
Solo compactado sobre a sapata
peso específico > 1600.00 kg/m³

P10



S10

PLANTA
ESC 1:25

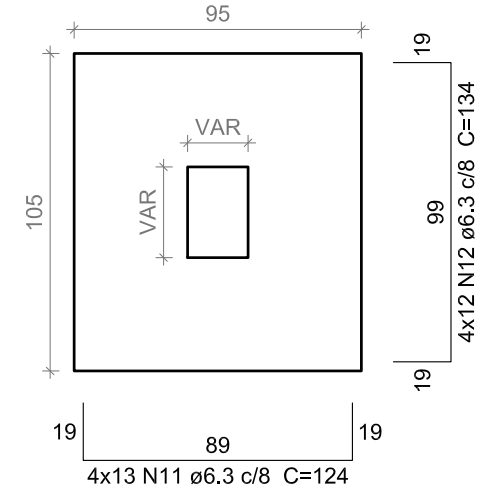
CORTE
ESC 1:25

Solo com capacidade de suporte > 2.00 kgf/cm²
Solo compactado sobre a sapata
peso específico > 1600.00 kg/m³

S9=S14=S16=S19

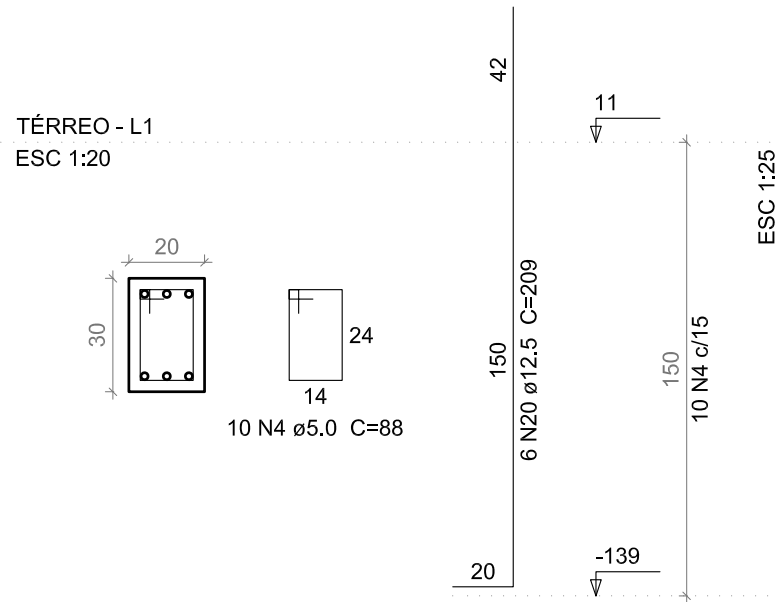
PLANTA
ESC 1:25

CORTE
ESC 1:25

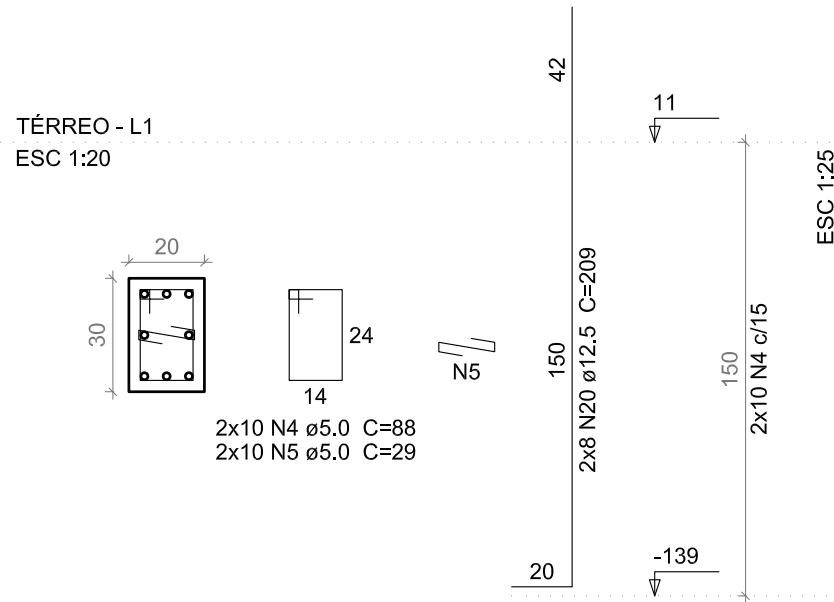


Solo com capacidade de suporte > 2.00 kgf/cm²
Solo compactado sobre a sapata
peso específico > 1600.00 kg/m³

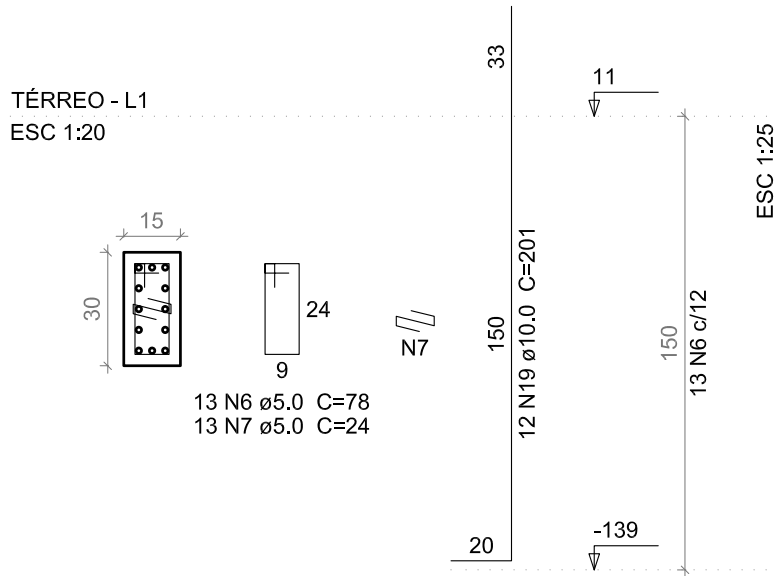
P14



P16=P19



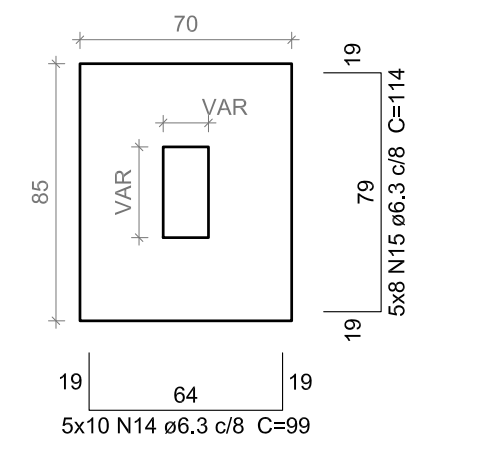
P9



S11=S12=S21=S22=S33

PLANTA
ESC 1:25

CORTE
ESC 1:25

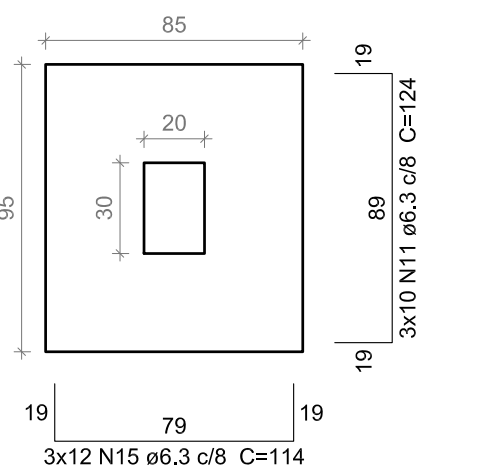


Solo com capacidade de suporte > 2.00 kgf/cm²
Solo compactado sobre a sapata
peso específico > 1600.00 kg/m³

S13=S23=S24

PLANTA
ESC 1:25

CORTE
ESC 1:25

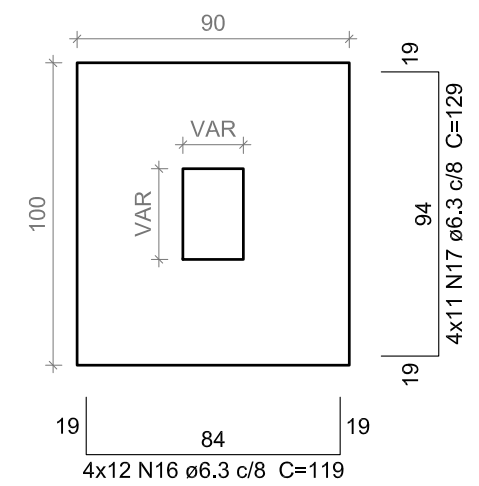


Solo com capacidade de suporte > 2.00 kgf/cm²
Solo compactado sobre a sapata
peso específico > 1600.00 kg/m³

S15=S17=S18=S20

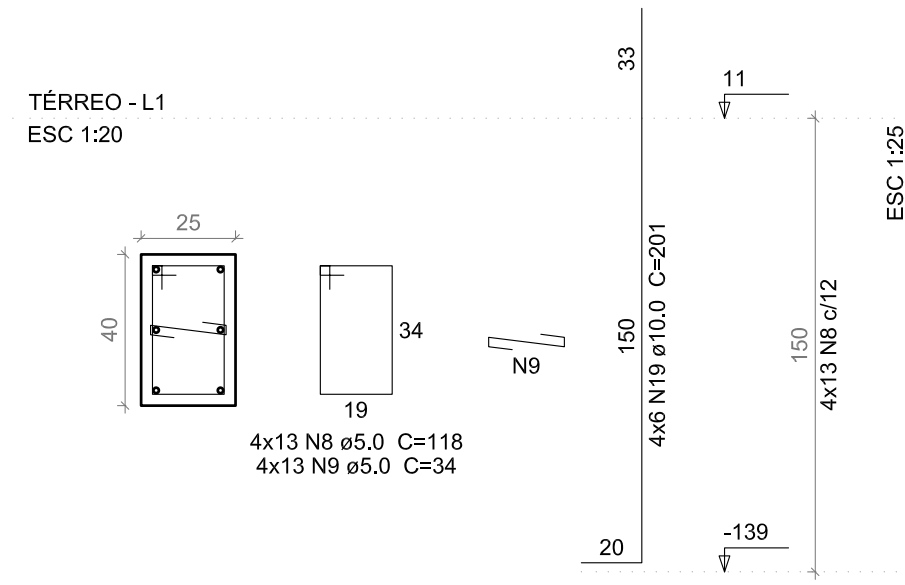
PLANTA
ESC 1:25

CORTE
ESC 1:25

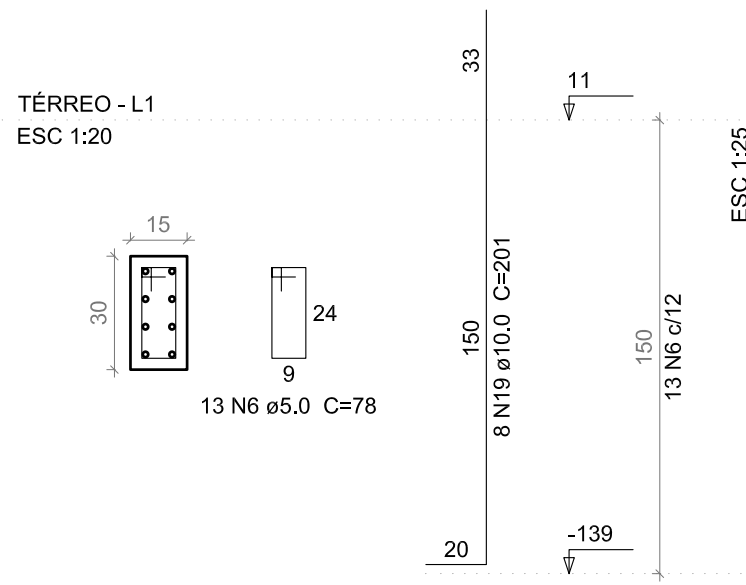


Solo com capacidade de suporte > 2.00 kgf/cm²
Solo compactado sobre a sapata
peso específico > 1600.00 kg/m³

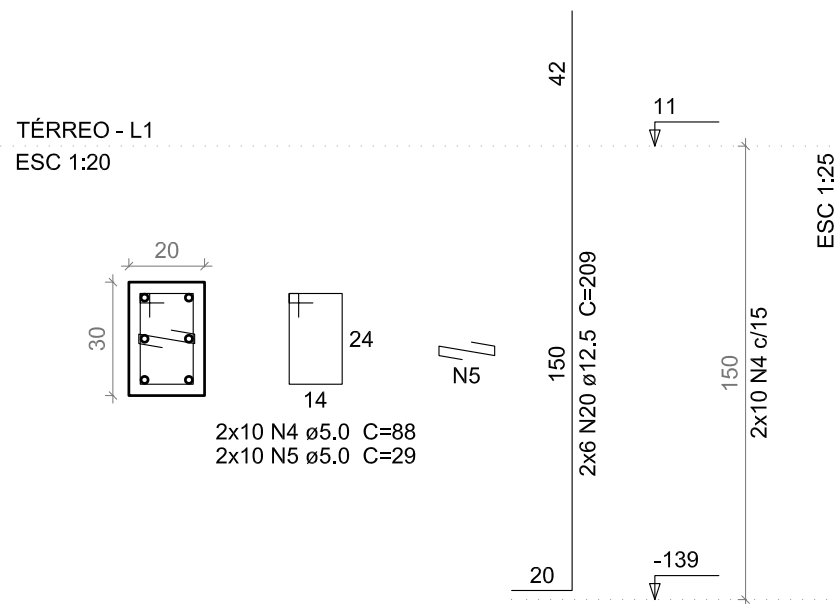
P11=P12=P21=P22



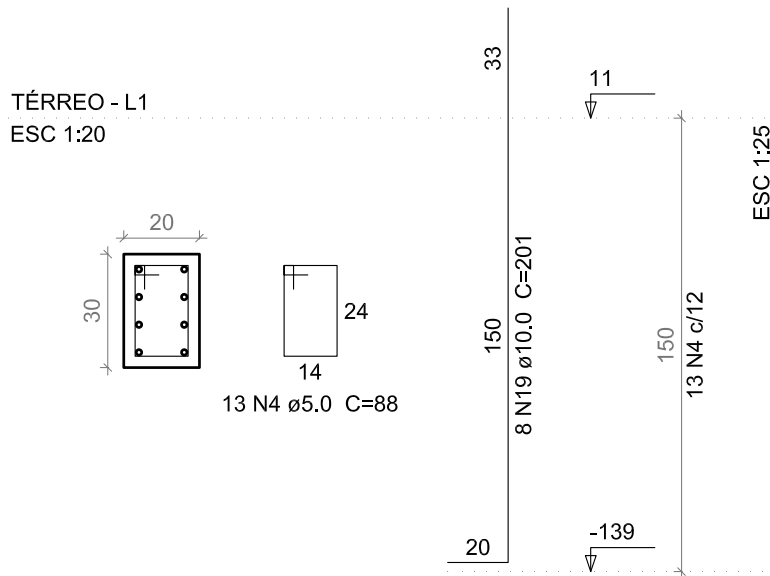
P33



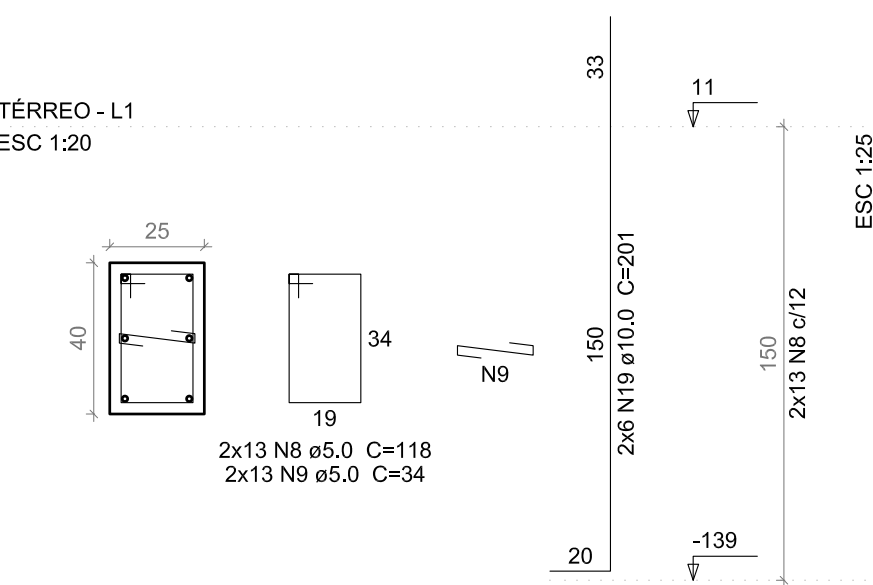
P13=P23



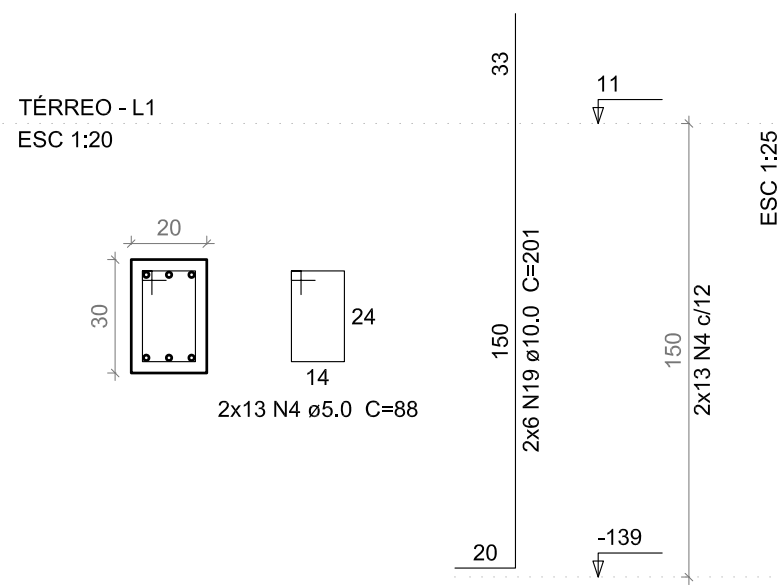
P24



P15=P18



P17=P20



Relação do aço



AÇO	N	DIAM (mm)	QUANT (Barras)	UNIT (cm)	C.TOTAL (cm)
16xS8	1	5.0	208	188	39104
S17	2	5.0	208	79	16432
	3	5.0	624	39	24336
	4	5.0	89	88	7832
	5	5.0	40	29	1160
	6	5.0	39	78	3042
	7	5.0	13	24	312
	8	5.0	78	118	9204
	9	5.0	78	34	2652
CA50	10	6.3	144	144	20736
	11	6.3	82	124	10168
	12	6.3	48	134	6432
	13	6.3	8	84	672
	14	6.3	57	99	5643
	15	6.3	76	114	8664
	16	6.3	48	119	5712
	17	6.3	44	129	5676
	18	8.0	160	103	16480
	19	10.0	272	201	54672
	20	12.5	34	209	7106

Resumo do aço

AÇO	DIAM (mm)	C.TOTAL (m)	PESO + 10 % (kg)
CA50	6.3	637.1	171.5
	8.0	164.8	71.5
	10.0	546.8	370.8
	12.5	71.1	75.3
CA60	5.0	1040.8	176.5

PESO TOTAL (kg)
CA50 689.1
CA60 176.5
Volume de concreto (C-30) = 13.66 m³
Área de forma = 105.95 m²

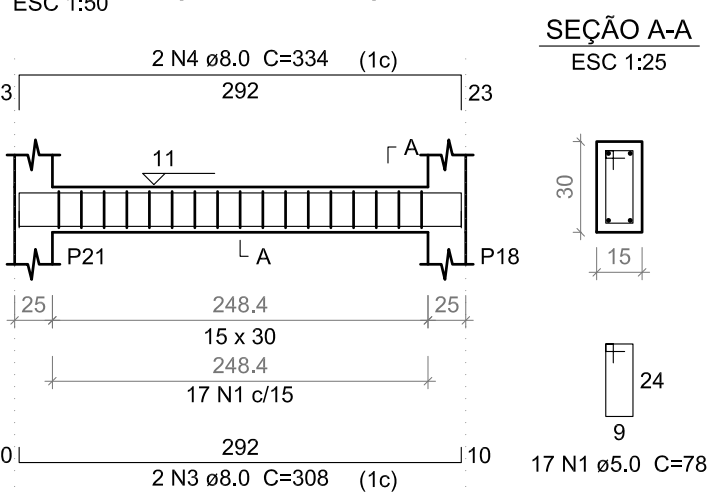
Nº	ALTERAÇÃO/REVISÕES	REVISADO POR	DATA

	AUTOR DO PROJETO: Engº. Fredrico Damasceno Pinheiro CREA 270082778-3	
	ENDEREÇO: Rua Dom José Thomaz, 194 - Bairro São José - Aracaju/SE dipop@ifs.edu.br	
	TEL: (79)3711-3139	

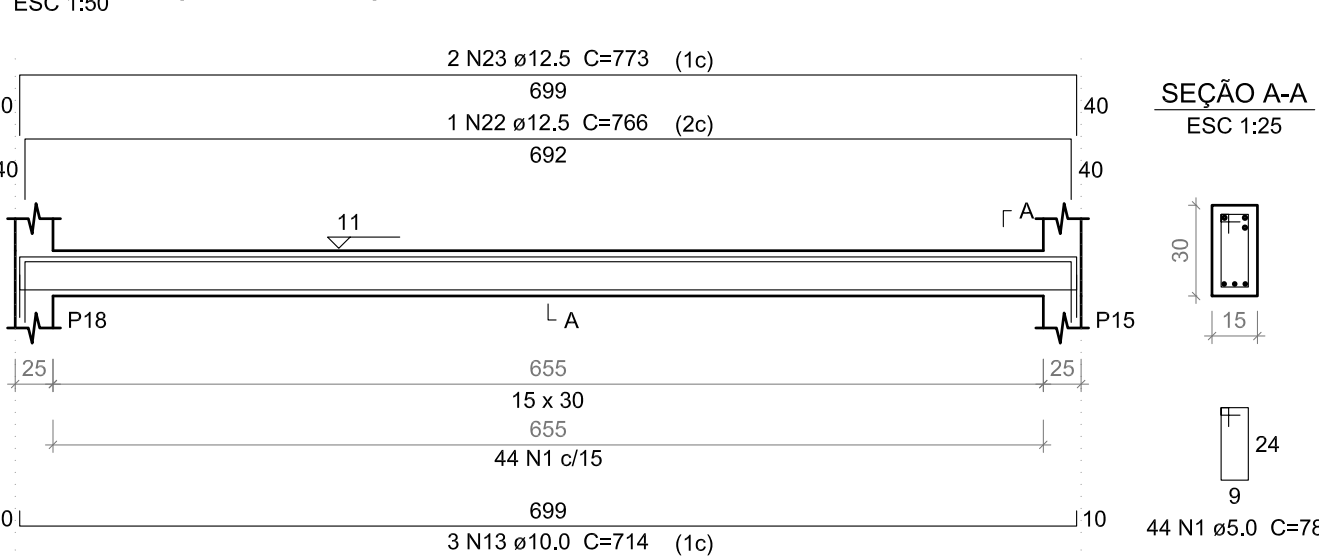
PROJETO ESTRUTURAL CAMPUS JAPARATUBA/SE

CLIENTE: INSTITUTO FEDERAL DE SERGIPE - CAMPUS JAPARATUBA	ESCALA: 1:100
ENDEREÇO: ROD. LÚCIO PRADO, S/N - JAPARATUBA/SE	DATA: JUN/2024
PLANTA: QUADRA COBERTA ARMAÇÃO DAS SAPATAS 1-2	PRANCHA: 03/07
CAMPUS: JAP CAM ESPECIALIDADE: EST PE SÉRIAL: 003 QUANTITATIVO: 007 REVISÃO: 001	

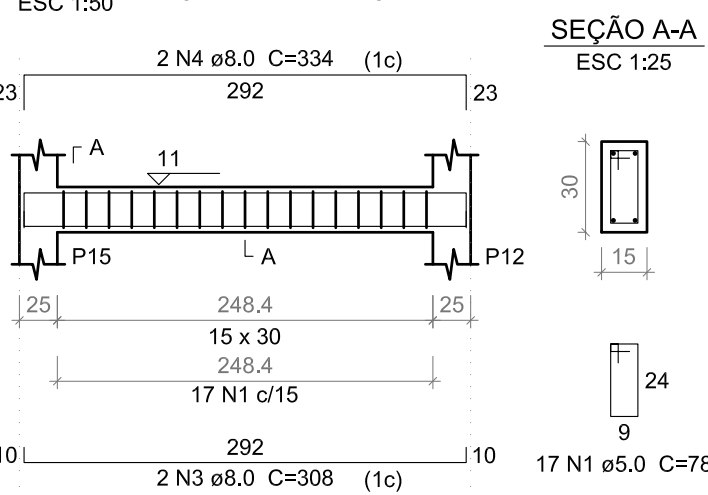
VB26 (15 x 30)



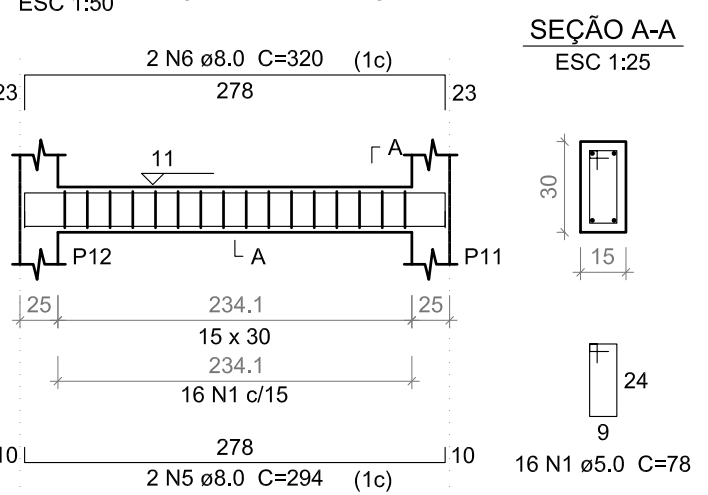
VB27 (15 x 30)



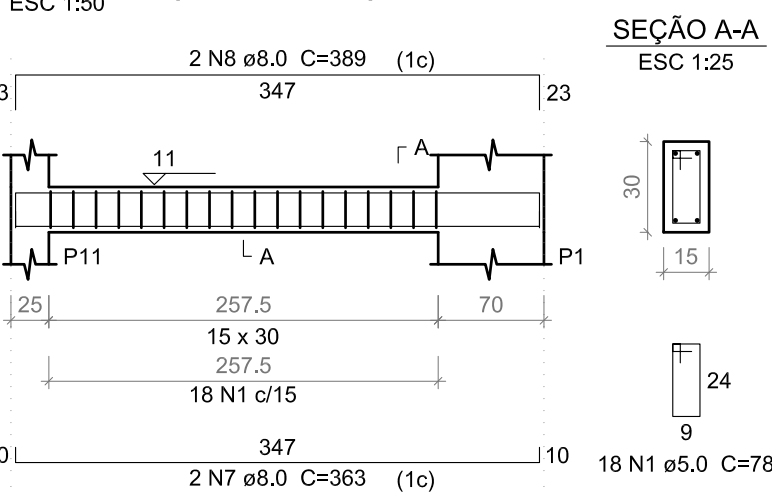
VB28 (15 x 30)



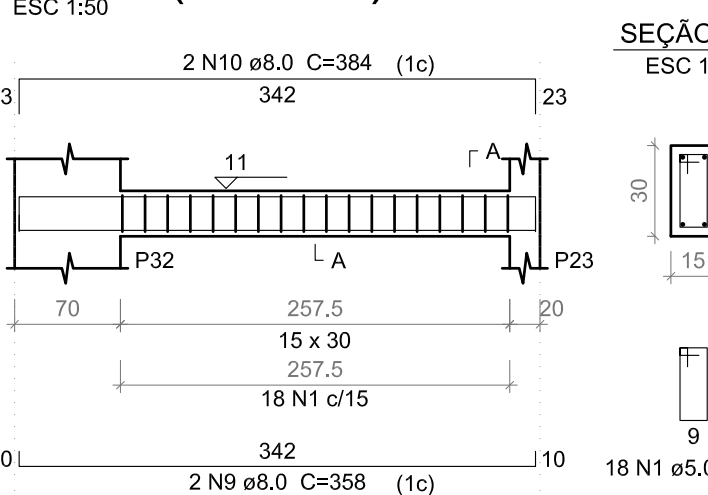
VB29 (15 x 30)



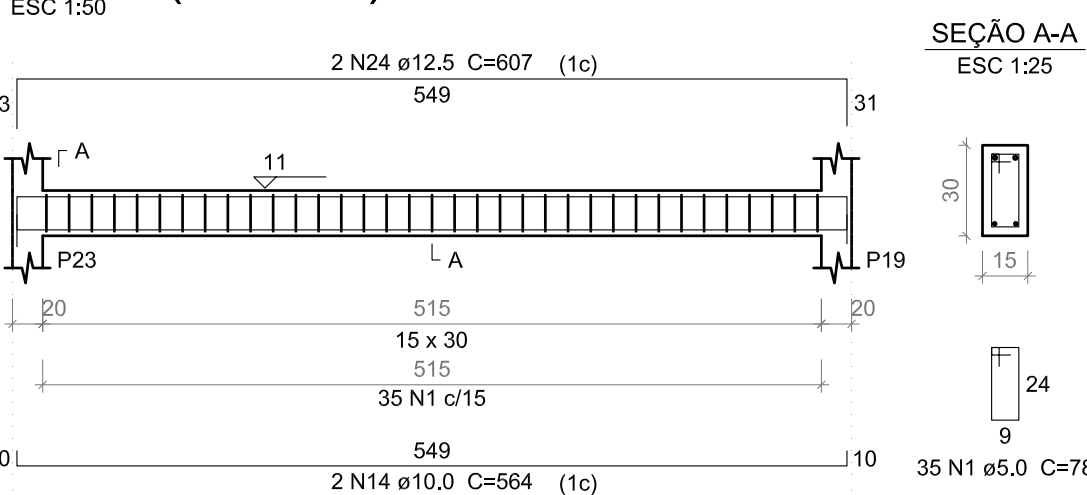
VB30 (15 x 30)



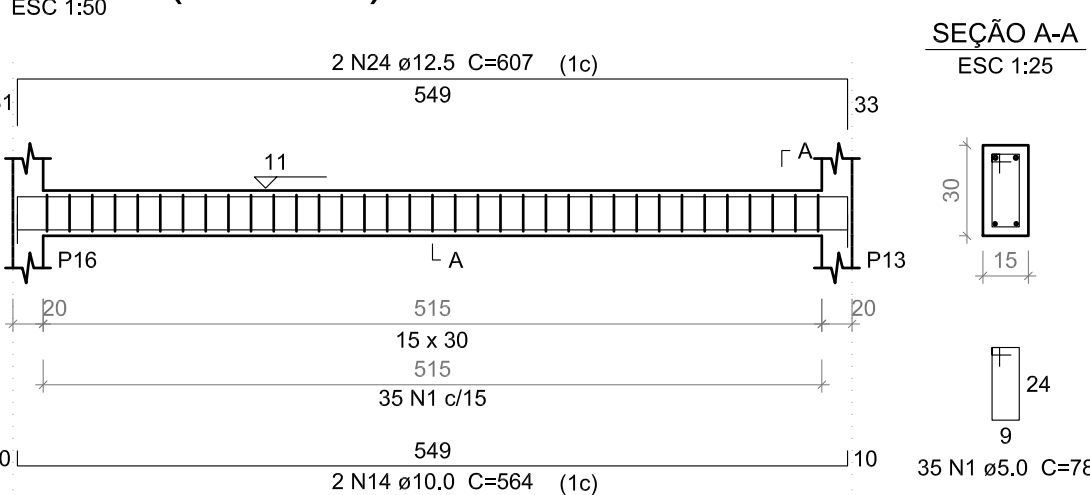
VB31 (15 x 30)



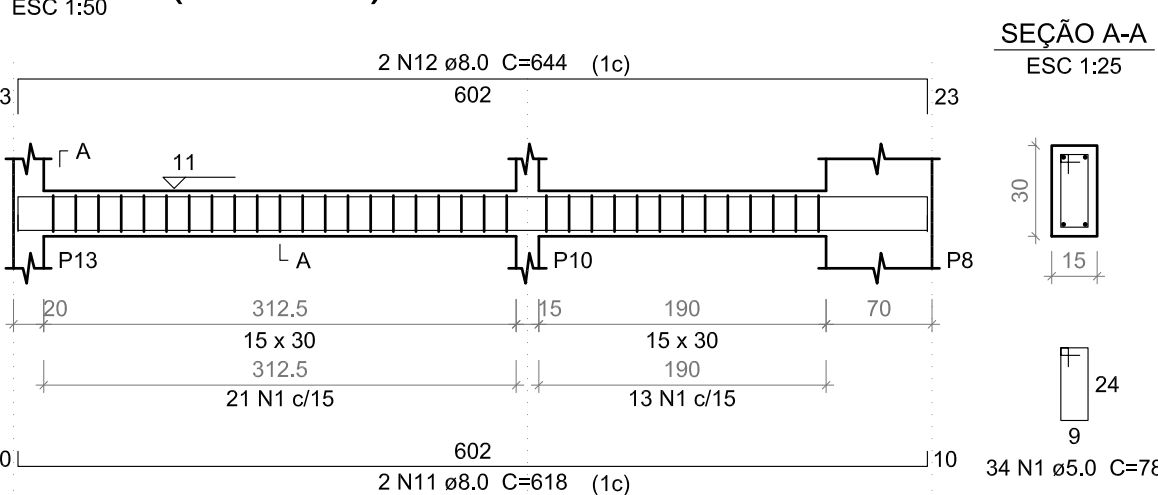
VB32 (15 x 30)



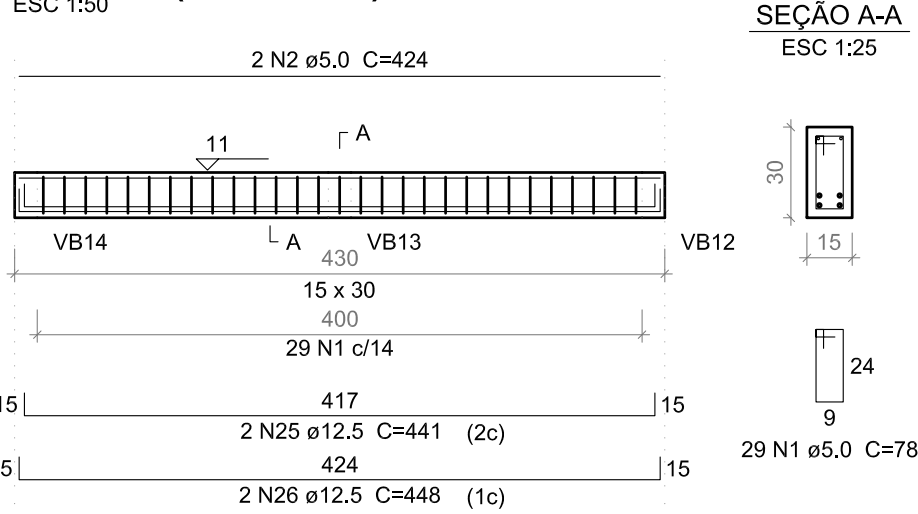
VB33 (15 x 30)



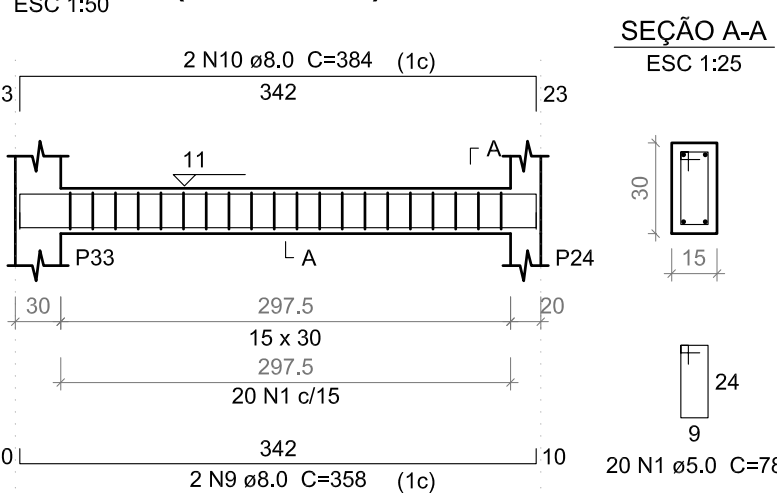
VB34 (15 x 30)



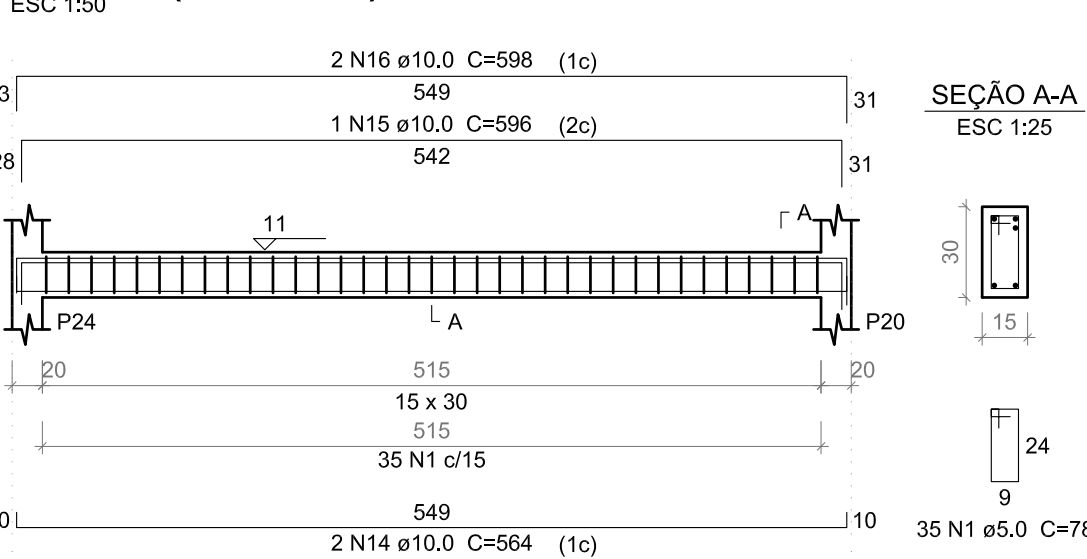
VB35 (15 x 30)



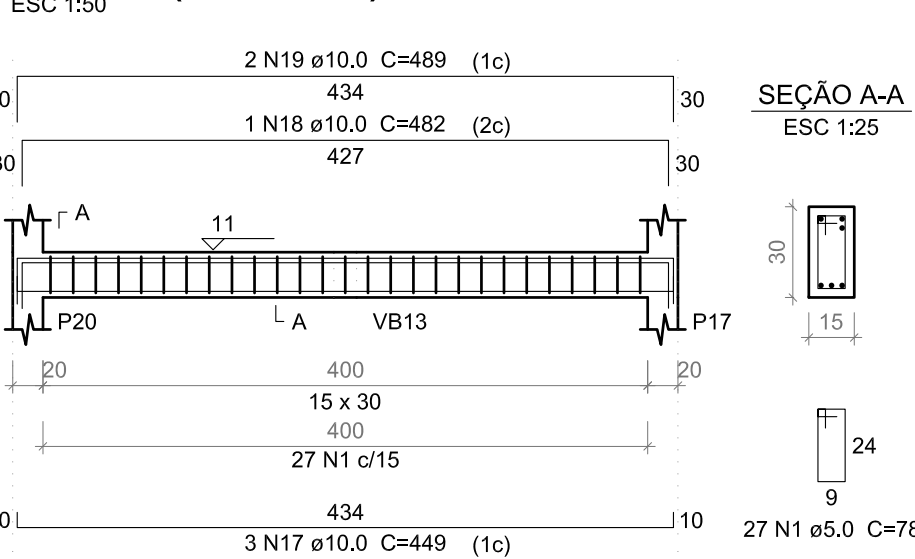
VB36 (15 x 30)



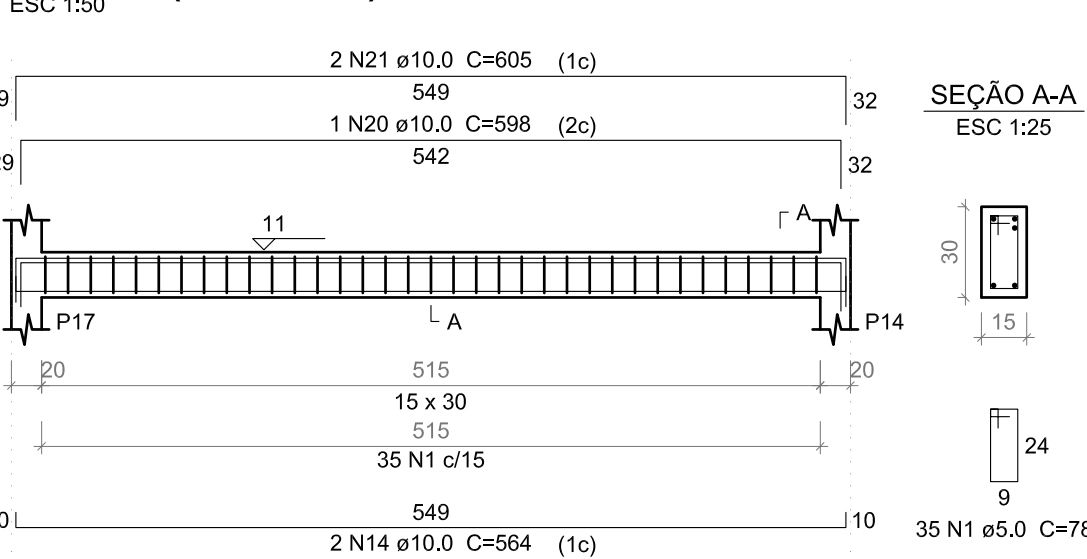
VB37 (15 x 30)



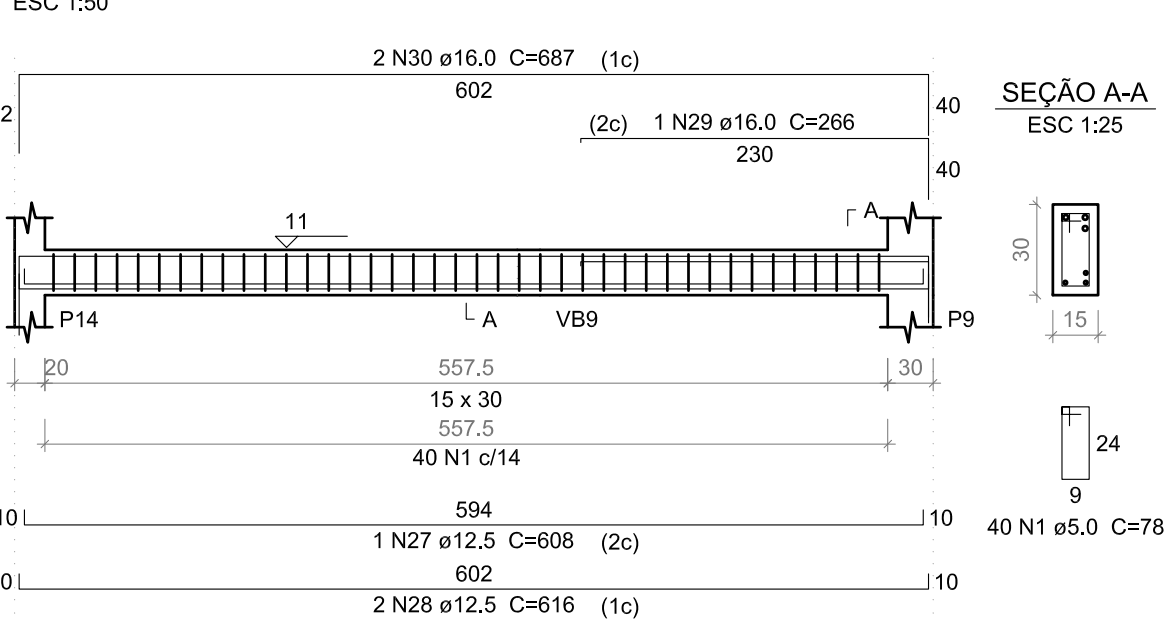
VB38 (15 x 30)



VB39 (15 x 30)



VB40 (15 x 30)



Relação do aço

AÇO	N	DIAM (mm)	QUANT (Barras)	UNIT (cm)	C.TOTAL (cm)
CA60	1	5.0	420	78	32760
CA50	2	5.0	2	424	848
	3	8.0	4	308	1232
	4	8.0	4	334	1336
	5	8.0	2	294	588
	6	8.0	2	320	640
	7	8.0	2	363	726
	8	8.0	2	389	778
	9	8.0	4	358	1432
	10	8.0	4	384	1536
	11	8.0	2	618	1236
	12	8.0	2	644	1288
	13	10.0	3	714	2142
	14	10.0	8	564	4512
	15	10.0	1	596	596
	16	10.0	2	598	1196
	17	10.0	3	449	1347
	18	10.0	1	482	482
	19	10.0	2	489	978
	20	10.0	1	598	598
	21	10.0	2	605	1210
	22	12.5	1	766	766
	23	12.5	2	773	1546
	24	12.5	4	607	2428
	25	12.5	2	441	882
	26	12.5	2	448	896
	27	12.5	1	608	608
	28	12.5	2	616	1232
	29	16.0	1	266	266
	30	16.0	2	687	1374

Resumo do aço

AÇO	DIAM (mm)	C.TOTAL (m)	PESO + 10 % (kg)
CA50	8.0	108	46.8
	10.0	130.7	88.6
	12.5	83.6	88.6
	16.0	16.4	28.5
CA60	5.0	336.1	57
PESO TOTAL (kg)			
CA50	252.5		
CA60	57		

Volume de concreto (C-30) = 3.12 m³
Área de forma = 52.04 m²



AUTOR DO PROJETO:
Engº. Fredrico Damasceno Pinheiro
CREA 270082778-3



ENDEREÇO:
Rua Dom José Thomaz, 194 - Bairro São José - Aracaju/SE
dipop@ifs.edu.br

TEL: (79)3711-3139

PROJETO ESTRUTURAL CAMPUS JAPARATUBA/SE

CLIENTE:
INSTITUTO FEDERAL DE SERGIPE - CAMPUS JAPARATUBA

ENDEREÇO:
ROD. LÚCIO PRADO, S/N - JAPARATUBA/SE

ESCALA: 1:100

DATA: JUN/2024

PLANTA: QUADRA COBERTA
ARMAÇÃO DAS VIGAS BALDRAMES

PRANCHA:

04/07

CAMPUS: JAPARATUBA
OPERAÇÃO: CAM
ESPECIALIDADE: EST
FASE: PR
SERIAL: 004
QUANTITATIVO: 007
REVISÃO: 001